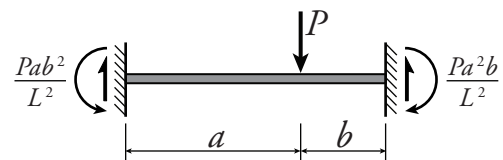
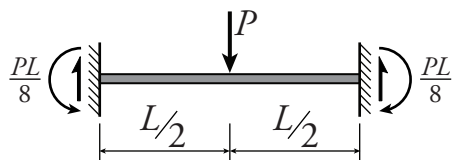


FIXED END MOMENT TABLE (v 1.0)

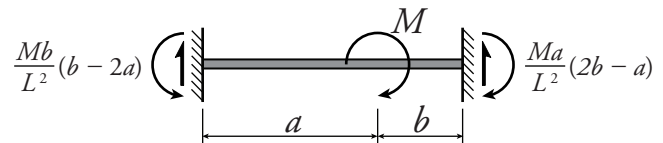
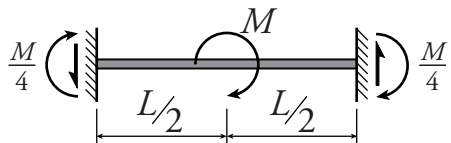
The values in the table represent the fixed end moment reactions for a fixed-fixed beam subjected to the loadings shown. All beams have a total length L .

If the moment is negative, reverse the direction of the moment arrow as drawn.

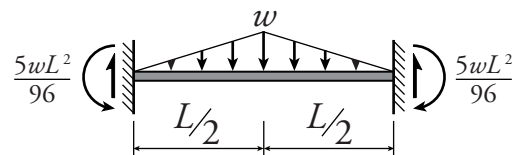
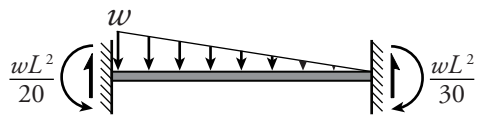
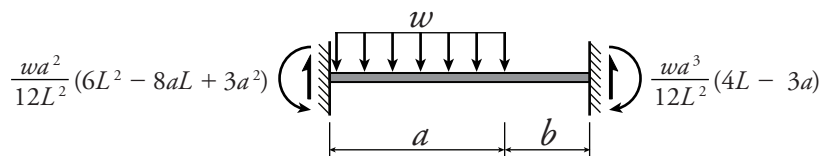
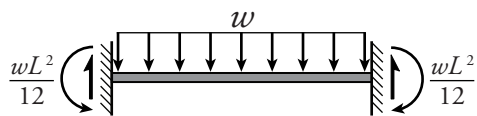
POINT LOADS



POINT MOMENTS



DISTRIBUTED LOADS



SUPPORT MOVEMENTS

